

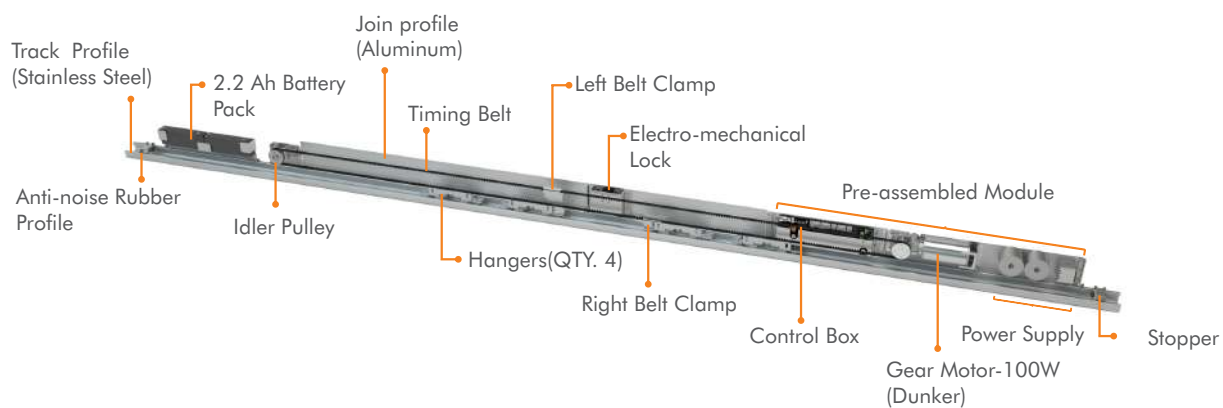


www.deutschtec.de

Airdrive68PR
Automatic Sliding Door

Airdrive68PR

68mm*135mm - the tiniest powerful operator available in the world market



Standard	Airdrive68PR
DIN18650	✓
EN16005	✓
EN60335	✓
EN ISO 13849	✓
EU low voltage directives	✓

Standard	Airdrive68PR
EU EMC directives	✓
ISO 9001	✓
CE conformity	✓
1.000.000 cycles durability test	✓

Technical Detail **Airdrive68PR**

Opening width - single panel	800 - 2000 mm
Opening width - double panel	1000 - 3000 mm
Max leaf weight, single, SS track	1 x 150 Kg
Max leaf weight, double, SS track	2 x 135 Kg
Max leaf weight, single, AL track	1 x 140 Kg
Max leaf weight, double, AL track	2 x 120 Kg
Operator height	68 mm
Operator depth	135 mm
Opening speed	Variable up to 0.9 m/s (Double leaves)
Closing speed	Variable up to 0.9 m/s (Double leaves)
Hold-open time	0 - 30 s
Ambient temperature	-15 to + 50°C
Protection class	IP 20
Track profile	Stainless steel / Aluminium
Anti-noise rubber profile	✓
Power supply unit	230V / 24V, 130VA
Gear motor power	100 W
Number of motors	1
Number of control units	1
Number of hangers per leaf	2
Dual gear motor and control unit set for master and slave concept	-

Technical Detail **Airdrive68PR**

Max power consumption	250 W
Max operation cycles with 2.2 Ah battery (Optional)	≈400
Possibility to adjust force limitation according to DIN18650 and EN16005	✓
Possibility to use safety sensors with testing signal	✓
Emergency exit routes in both directions	-
Mechanical key switch (Optional)	✓
24V DC output for external accessories	✓
Power Lock	✓
Possibility of using electromechanical lock (Optional)	✓
Lock monitoring	✓
Possibility of using digital programme switch (Optional)	✓
Read-out error memory with error codes (with digital programme switch)	✓
Programmable output (Optional)	✓
Programmable input (Optional)	✓
DMS (Optional)	✓

Frame Types

TBS	✓
UTS	✓
Saturn	✓
Frameless	✓

CONTROL UNIT

Meeting the following standards:

EN ISO 13849-1 | DIN 18650-2 | DIN 18650-1 | EN 16005 | EN 60335-1



DIN
18650

EN
16005

EN
60335

- Ability to work with battery in case of power-cut for non-escape models.
- Ability to charge and perfectly maintain the battery, which brings the battery a much longer life time.
- Ability to match with various types of sensors available in the market.
- Ability to be adjusted and programmed by digital programme switch.
- Self-diagnosis and error detection.
- Having standard RS 485 interface for connecting to other accessories.
- Ability to automatically adjust speed and slopes according to input voltage changes.
- Ability to work with 20% higher or lower than nominal input voltage.
- Completely protected system input ports which reduces the damage risk due to human error during installation.
- Possibility of using more software and hardware options by using DEAP device.

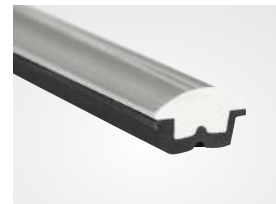
GEAR MOTOR

Like its other state-of-the-art parts, Deuschtec Airdrive68PR motors are fully made in Germany. Their 100W motors are absolutely indestructible and are there to ensure reliable performance for a lifetime. Great efficiency and enhanced function are achieved through employing years of experience and the latest technologies in the process of our motors' design and production. These brushed DC motors are so quiet that while in action, you will hear nothing but a muffled sound.



TRACK PROFILE

When Deuschtec's detachable aluminum track profiles are worn out after a lengthy period of time, they can easily be replaced, which costs much less in comparison with replacing the whole rail.



Since Deuschtec's stainless steel track profiles are rust-proof and anti-abrasion, they will never need to be replaced. This will be a great value for your money during time and will prevent any possible complication which may happen when replacing profiles.



FRAMES

Air-TBS

Invisible frame top when employing Air-TBS profile system

The combined design of Airdrive68PR system accompanying thermal break Air-TBS frames has resulted in its horizontal upper profile being invisible and has been a tremendous help in bringing outstanding gorgeousness to any entrance. By using Air-TBS thermal break frames, you will have the one-of-a-kind solution which not only gives you incredible beauty, but also saves the energy.



TBS

When saving energy is of importance, TBS frame is an economical and inexpensive solution.



UTS

UTS frame is the non-thermal break version of TBS and has all its advantages.



SATURN

Saturn is a reasonably-priced frame suitable for single-glazing and tempered glass.



FRAMELESS

This full-glass system is the most suitable choice for those who wish to have elegance combined with radiance.



ACCESSORIES

Mechanical Key Switch

Deuschtec Airdrive presents its mechanical key switch with the five modes of full open, partial open, lock, automatic and one-way. Simple yet functional, this is another accessory which will definitely come in handy.



Digital Programme Switch

User-friendly has been given a whole new meaning with this digital programme switch's easy-to-read, full-text display. You will get easy access to all performance data and parameters and for any special need you might have, its adjustment and diagnostic processes can be accurately duplicated or customized. Protection password code is another significant feature of this digital programme switch. Such a terrific "optional" part cannot be ignored!



Electromechanical Lock

Deuschtec Electromechanical lock has been a dependable way to safeguard your security all the time. It utilizes steel pins to lock both leaves simultaneously and therefore, is much safer compared to those models which lock the timing belt or just one leaf. Furthermore, since it employs bi-stable mechanism, system's power reset does not affect the lock's state. Due to using powerful batteries and an intelligent circuit, battery usage is reduced to zero when the door is locked and there is a power-cut.



Battery

We are offering you doors which will never fail. Deuschtec Airdrive batteries provide the system with steady flow of energy. In the event of a power-cut, the 2.2 Ah battery will provide you with ≈ 400 cycles of open/close. No matter what, these doors with their marvelous operating systems will not let you down!





w w w . d e u t s c h t e c . d e

Deuschtec GmbH
Am Fuchsbau 13
15345 Petershagen/Eggersdorf
Deutschland

Phone: +49 (0)3341 30 22 4 - 0
Fax: +49 (0)3341 30 22 4 - 25

E-Mail: info@deuschtec.de



EN.16.19082019