

# HOLUX **IBERIA**



## PEGASO

[www.holuxiberia.es](http://www.holuxiberia.es)  
[info@holuxiberia.es](mailto:info@holuxiberia.es)

### Automatic Sliding Door:

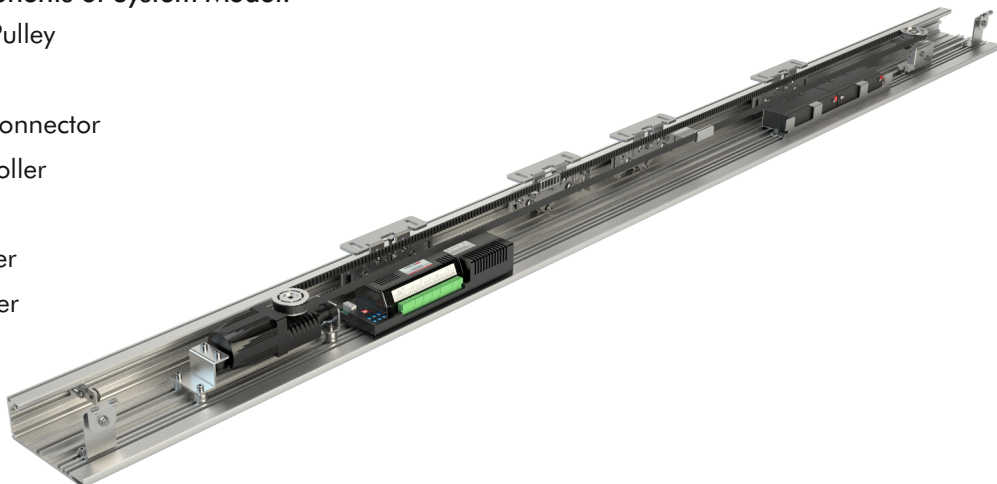
Currently the lifestyle of any individual keeps them busy and occupied in their daily schedules, which can be eased with the help of some automation.

By bringing original design, simple aesthetic qualities and top-notch technology together, we have managed to create dependable and powerful sliding entry solutions. Automatic sliding doors are the combination of technology, beauty and functions together. Using automatic sliding doors provide security for your building and users. Automatic sliding doors help in saving time, money and energy.

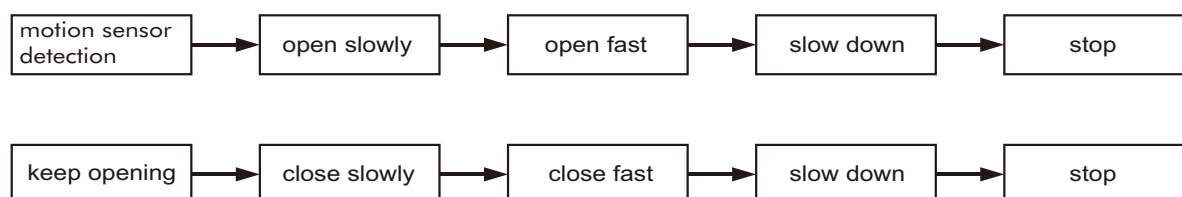
We provide you security, beauty and technology together by design of new models of automatic sliding doors.

### Components of System Model:

- Idler Pulley
- Belt
- Belt Connector
- Controller
- Motor
- Hanger
- Stopper



### The Mechanism's Working Steps:



## Specifications

## Pegaso

Door leaf mode	Single-opening	Double-opening
Door leaf weight	Max 160kg	Max 2x150kg
Door leaf width	DW=700-2500mm	DW=600-1800mm
Voltage	AC $\leq$ 16.5 $\pm$ 5%V DC $\leq$ 24.5V	
Opening speed	15-50cm/s (Adjustable)	30-100cm/s (Adjustable)
Closing speed	15-50cm/s (Adjustable)	30-100cm/s (Adjustable)
Opening time	0-20second (Adjustable)	
Manual open force	<40N	<50N
Motor	24V,55W brushless DC motor	
Operating temperature	-20°C ~ +70°C	-20°C ~ +70°C

## Frame types

THB	✓
TBS	✓
UTS	✓
Saturn	✓
Frameless	✓



## CONTROL UNIT

By drawing on the most advanced engineering technology together with a fruitful collaboration with the best electronic manufacturers, Pegaso series' controlling microprocessor circuit boards have been made to respond to all European Union necessities such as machinery directive, electromagnetic compatibility (EMC) and low voltage directives. Furthermore, due to the use of sophisticated technologies to save energy and resources you can be justly proud of enjoying an eco-friendly technology!



### Some points worth considering are

- Ability to work with battery in case of power cut for non-escape models.
- Ability to charge and perfectly maintain the battery which brings the battery a much longer lifetime.
- Ability to match with various types of sensors available in the market.
- Self-diagnose and error detection.
- Completely protected system input ports which reduce the damage risk due to human error during installation.



### GEAR MOTOR

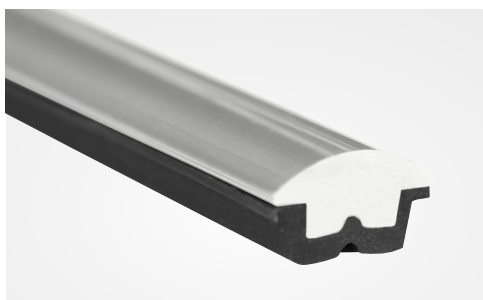
Pegaso's motors are absolutely indestructible and are there to ensure reliable performance for a life-time.

Great efficiency and enhanced function are achieved through employing years of experience and the latest technologies in the process of our motors' design and production. Pegaso brushless DC motor works so smoothly that their noise is literally like an almost inaudible whisper.



### TRACK PROFILE

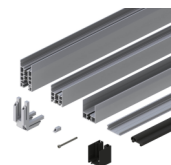
When Pegaso's detachable aluminum track profiles are worn out after a lengthy period of time, they can easily be replaced, which costs much less in comparison with replacing the whole rail.



## FRAMES

### THB - THERMAL BREAK FRAME

A great choice of frame to pair with this impeccable series is thermal break frames (THB) which by insulating the door against undesired or harsh weather conditions, save the energy and consequently, your budget! Furthermore, since these are incredibly strong frames, they are an ideal option when heavy doors are required.



### TBS - THERMAL BREAK FRAME

When saving energy is of importance, TBS frame is an economical and inexpensive solution. Besides being thermal break, it can be coupled with double-glazing glass. Its thinness and also being an energy-saver, have made TBS frame a smart gorgeous choice for modern architecture. This type of frame has successfully been tested for escape doors.



### UTS

This frame is the non-thermal break version of TBS and has all its advantages. Due to not being thermal break, it has an even more competitive price. While enjoying all TBS beauties, for buildings' inside doors and for places where the exchange of cold and hot air does not matter much, UTS is an excellent value.



### SATURN

This is a reasonably-priced frame suitable for single-glazing and tempered glass. When you wish to have a glass frontage and yet, prefer to use a thin frame instead of frameless glass, Saturn is a convenient low-priced solution.



### FRAMELESS

This full-glass system is the most suitable choice for those who wish to have elegance combined with radiance.

These sliding doors provide excellent light exchange between inside and outside.



## ACCESSORIES

### Battery

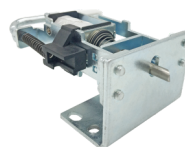
Pegaso series will continue functioning even after a power-cut thanks to their powerful 2.2 Ah batteries.

Needless to say, the number of operation cycles depends on some key factors such as door leaves, weight, traffic, speed adjustment, etc.



### Electromechanical lock

Pegaso Electromechanical lock has been a dependable way to safeguard your security all the time. It utilizes steel pin to lock leaves and therefore, is much safer compared to those models which lock the timing belt. Furthermore, since it employs bi-stable mechanism, system's power reset does not affect the lock's state.\*



### Mechanical Key Switch

Pegaso presents its mechanical key switch with the five modes of full open, partial open, lock, automatic and one-way. Simple yet functional, this is another accessory which will definitely come in handy.



### Remote Control

Remote Control can be very convenient for the user and works by pushing a button on the remote control. The Remote controls door opening and allows user to set door status in Automatic, Open, One Way and Lock. A Remote Control can be safer and easier for all types of people to use.



\*Thus, even weeks after the input electricity has been cut, the system can open the lock and the door by the key switch, which is an optional accessory and can be installed outside of the entry area.



España, Valencia, C/Cid 46 Polígono Bovalar Alaquas  
Tel: +34 961642885



EN.06.06092020

[www.holuxiberia.es](http://www.holuxiberia.es)  
[info@holuxiberia.es](mailto:info@holuxiberia.es)